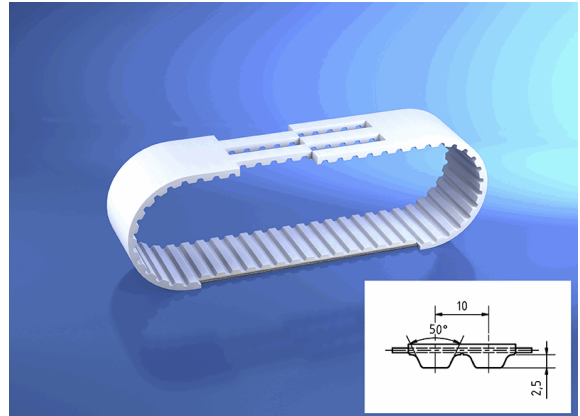


10069043

BRECO® - Zahnriemen, V

25 AT10 / 2000 mm



23.11.2023 12:13:21

Technical Data

Weight	0,320 kg per piece
belt type	standard
connection type	weldet
eCl@ss 6.2	23-17-02-05
material type	TPUST1
pitch length	2.000,00 millimeter
polyamide tissue	ohne
tension member belt	standard
tooth profile	AT 10
width	25,00 millimeter

Conformity

Commodity code	39269097
China-RoHS	n/a

* n/s - not specified
n/a - not applicable

**** technical specifications/ conformities**

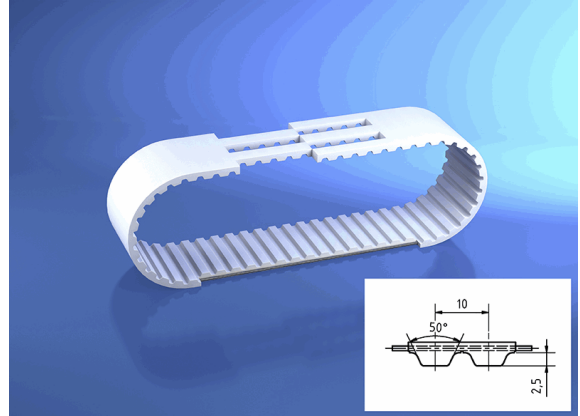
This data sheet has been created with great care and all information has been checked for correctness. However, no liability is accepted for any incorrect or incomplete information. Product images and drawings are for illustration purposes only and may vary in detail. Due to the constant further development of the products, changes in the product range and the product design are reserved! Performance and consumption data as well as descriptions may therefore differ. The use of the products is beyond our control and is therefore not our area of responsibility.



10069043

BRECO® - Zahnriemen, V

25 AT10 / 2000 mm



23.11.2023 12:13:21

