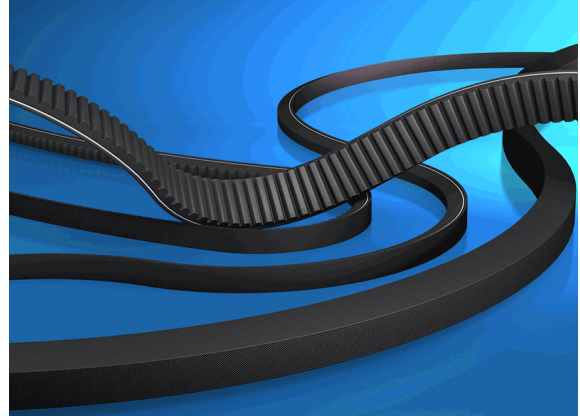


10037778

CONTI-V® FO

CX x Li = 1321 mm / Ld = 1380 mm



28.02.2024 14:18:06

Technical Data

| | |
|--------------|---------------------|
| Weight | 0,413 kg per piece |
| V-profile | CX |
| inner length | 1.321,00 millimeter |
| eCl@ss 6.2 | 23-17-02-01 |
| height | 14,00 millimeter |
| length Ld | 1.380,00 millimeter |
| performance | Standard |
| width | 22,00 millimeter |

Conformity

| | |
|----------------------|------------------------|
| Commodity code | 40103200 |
| REACH regulation | 2006/1907/EG (REACH) |
| RoHS directive | 2011/65/EU (RoHS II) |
| RoHS directive (III) | 2015/863/EC (RoHS III) |

* n/s - not specified
n/a - not applicable

**** technical specifications/ conformities**

This data sheet has been created with great care and all information has been checked for correctness. However, no liability is accepted for any incorrect or incomplete information. Product images and drawings are for illustration purposes only and may vary in detail. Due to the constant further development of the products, changes in the product range and the product design are reserved! Performance and consumption data as well as descriptions may therefore differ. The use of the products is beyond our control and is therefore not our area of responsibility.



10037778

CONTI-V® FO

CX x Li = 1321 mm / Ld = 1380 mm



28.02.2024 14:18:06

