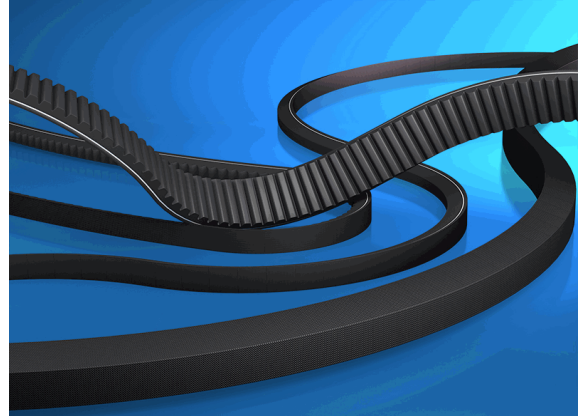


10037769

CONTI-V® FO

CX x Li = 1092 mm / Ld = 1151 mm



28.02.2024 14:17:23

Technical Data

Weight	0,342 kg per piece
V-profile	CX
inner length	1.092,00 millimeter
eCl@ss 6.2	23-17-02-01
height	14,00 millimeter
length Ld	1.151,00 millimeter
performance	Standard
width	22,00 millimeter

Conformity

Commodity code	40103200
REACH regulation	2006/1907/EG (REACH)
RoHS directive	2011/65/EU (RoHS II)
RoHS directive (III)	2015/863/EC (RoHS III)

* n/s - not specified
n/a - not applicable

**** technical specifications/ conformities**

This data sheet has been created with great care and all information has been checked for correctness. However, no liability is accepted for any incorrect or incomplete information. Product images and drawings are for illustration purposes only and may vary in detail. Due to the constant further development of the products, changes in the product range and the product design are reserved! Performance and consumption data as well as descriptions may therefore differ. The use of the products is beyond our control and is therefore not our area of responsibility.



10037769

CONTI-V® FO

CX x Li = 1092 mm / Ld = 1151 mm



28.02.2024 14:17:23

