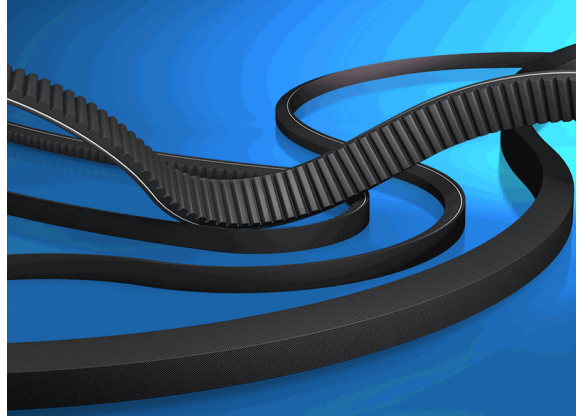


**10037670**

**CONTI-V® FO**

**BX x Li = 1600mm / Ld = 1645 mm**



13.02.2024 16:24:57

**Technical Data**

Weight	0,272 kg per piece
V-profile	BX
inner length	1.600,00 millimeter
eCl@ss 6.2	23-17-02-01
height	11,00 millimeter
length Ld	1.645,00 millimeter
performance	Standard
width	17,00 millimeter

**Conformity**

Commodity code	40103200
REACH regulation	2006/1907/EG (REACH)
RoHS directive	2011/65/EU (RoHS II)
RoHS directive (III)	2015/863/EC (RoHS III)

\* n/s - not specified  
n/a - not applicable

**\*\* technical specifications/ conformities**

This data sheet has been created with great care and all information has been checked for correctness. However, no liability is accepted for any incorrect or incomplete information. Product images and drawings are for illustration purposes only and may vary in detail. Due to the constant further development of the products, changes in the product range and the product design are reserved! Performance and consumption data as well as descriptions may therefore differ. The use of the products is beyond our control and is therefore not our area of responsibility.



**10037670**

**CONTI-V® FO**

**BX x Li = 1600mm / Ld = 1645 mm**



13.02.2024 16:24:57

